



Lewiston-Porter Special Education Program Review

- Michael F. Lewis, Ph.D.
- Lisa Kilanowski, D. Ed.



Overview

- Methods
- Outcomes
- Discussion/Questions



First...Thank You!

Board of Education

LewPort Teachers and Staff

LewPort Administration

Lew Port Families



Methods

Qualitative

- Focus Groups
 - 23 sessions with 40 staff
- Classroom Visits
 - 13 classrooms with 18 staff

Quantitative

- Online Survey
 - Staff, Student, Parent
 - Voluntary & Anonymous
 - 270 Total Responses
- Comparison District Analysis

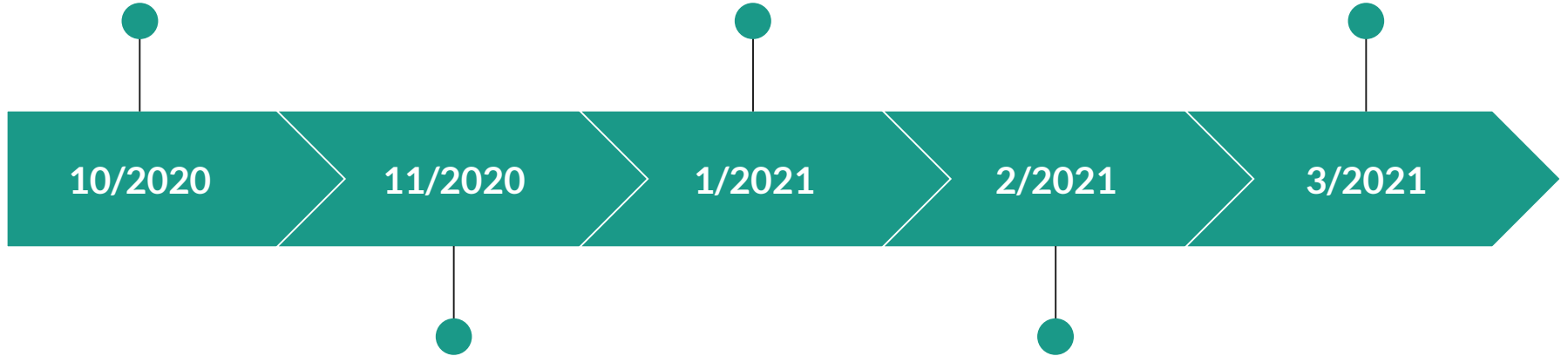


Timeline & Outcomes

Initial engagement and
planning

Survey Administration,
Focus Groups, Data
Review

Final Report
Submitted &
Presentation of
Findings



10/2020

11/2020

1/2021

2/2021

3/2021

Stakeholder
Presentations and
Survey Development

Classroom Visits,
Report Development



Outcomes

- The majority indicated that they “agreed” or “strongly agreed” services provided necessary support.
- The majority of teachers noted administrative support in delivery of special education services.
- Many staff believe there exists good communication and collaboration among stakeholders.
- Students reported that they are able to communicate effectively with their teachers.



Outcomes

- Concerns about consistent services among schools noted.
 - No program exists across all 4 schools.
- Some students indicated they were not using and did not need certain services on their IEP.
- Professional development identified as a need.
 - Continuum of Services
 - Types of Special Education Interventions

Comparison District Analysis



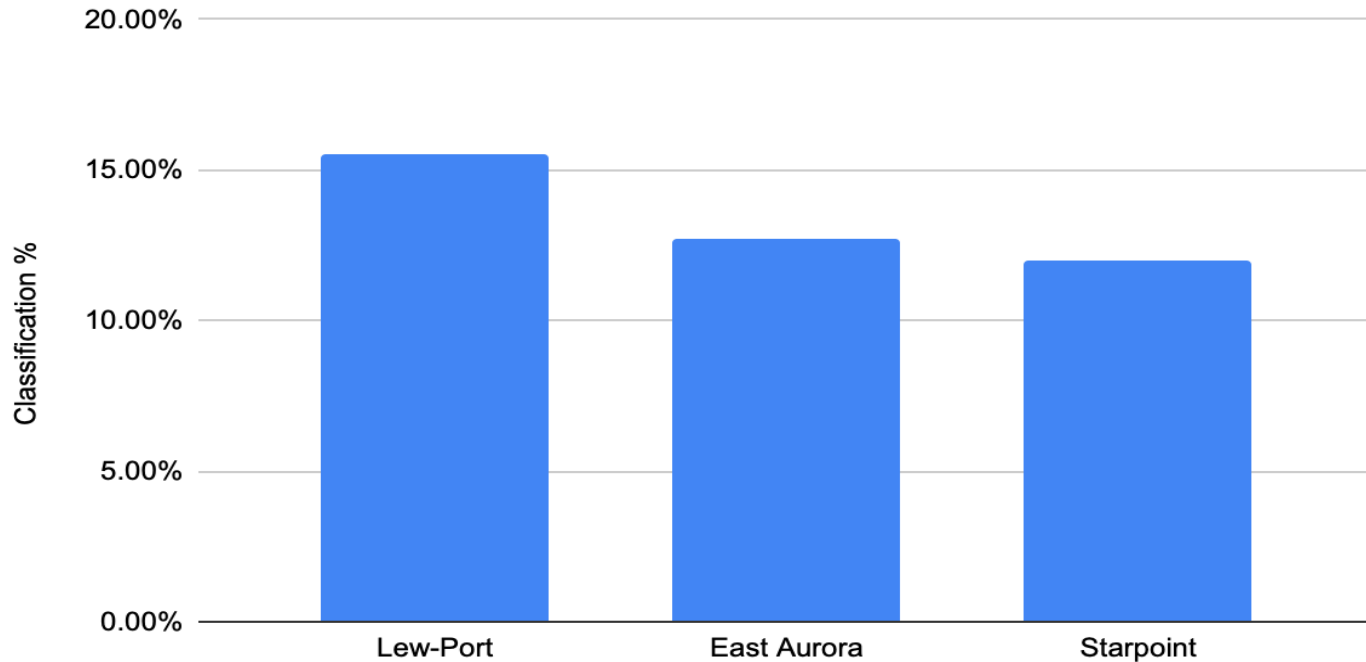
Comparison Districts

	Lewiston Porter	East Aurora	Starpoint
Standing	Good	Good	Good
SES	High	High	High
Enrollment	2361	2304	2843
2020 Business First Ranking	7	2	5

Classified Students



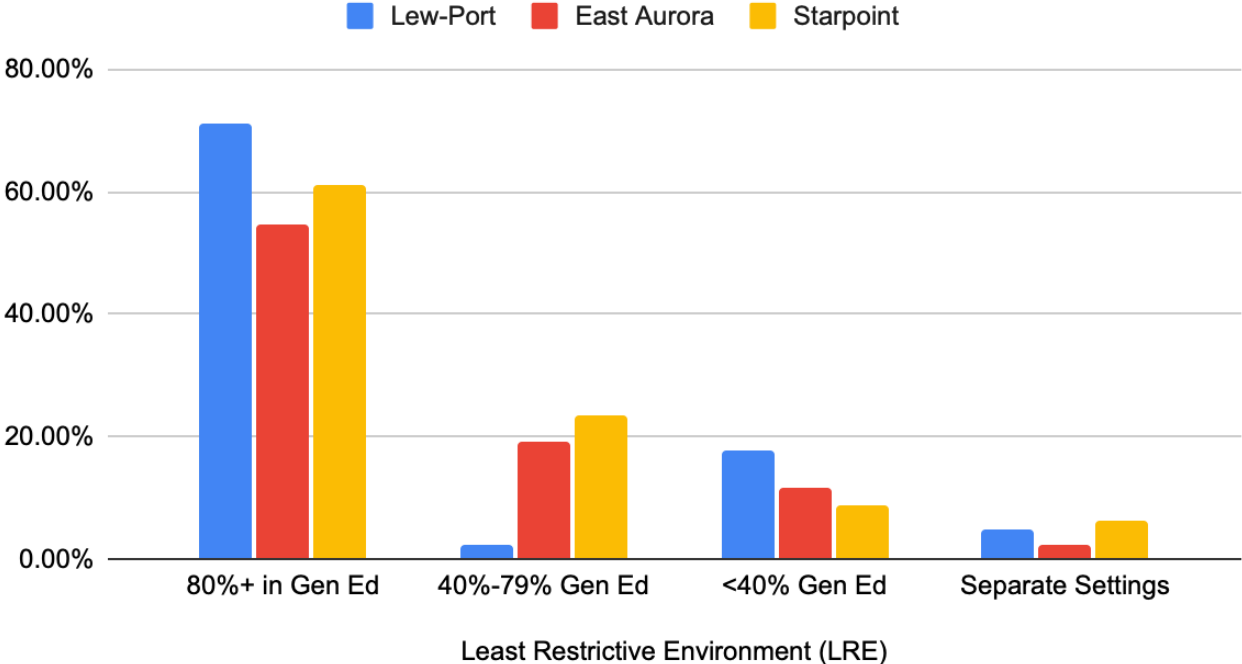
Percent of Students Classified as SWDs



Special Education Placements



Special Education Placements

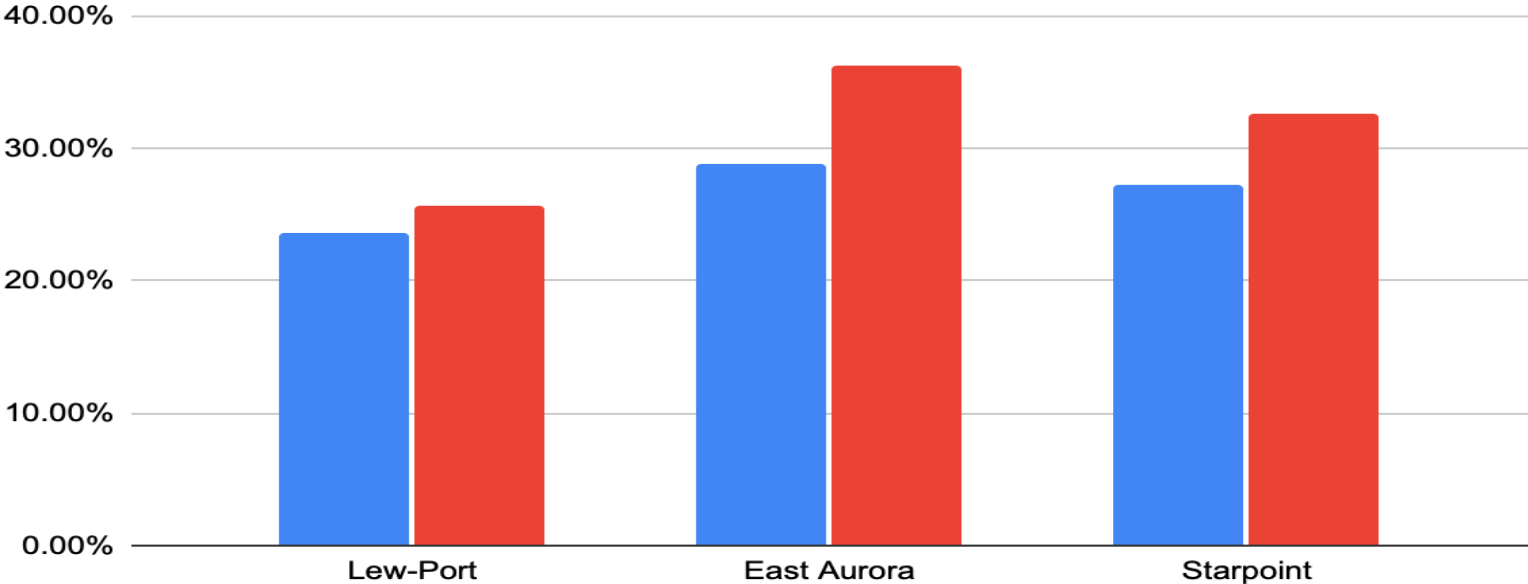


3-8 ELA and Math



Grades 3-8 ELA & Math Proficiency

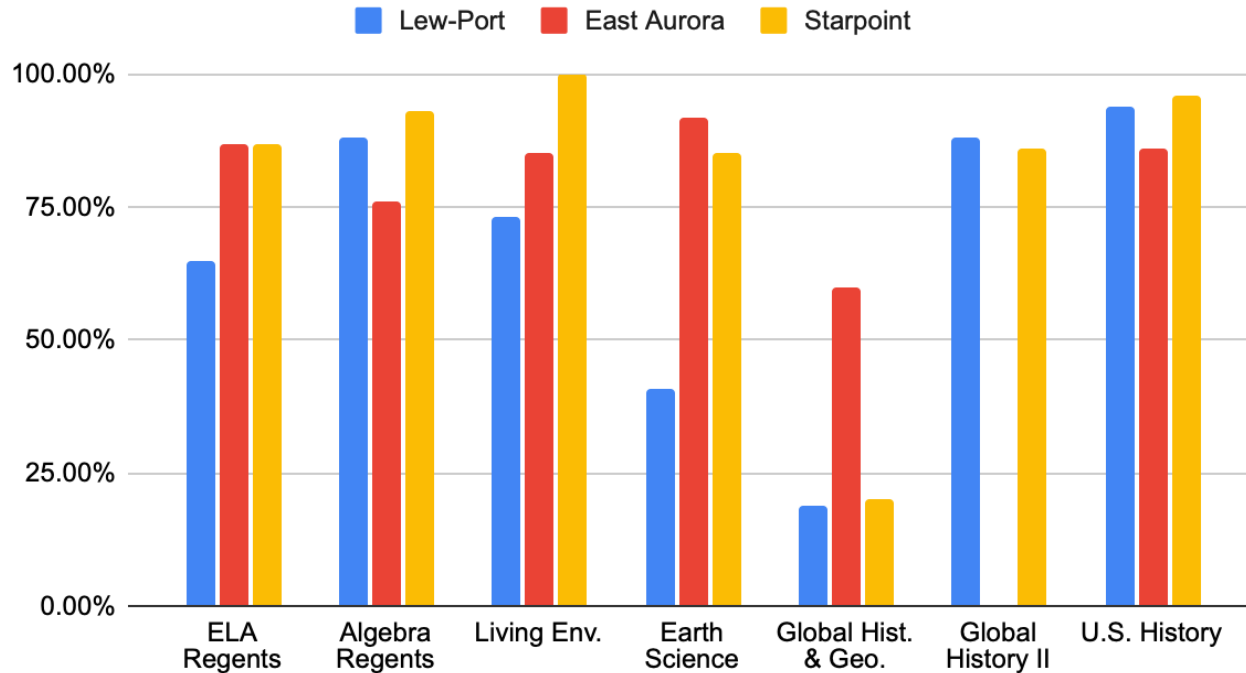
■ ELA Level 3+ ■ Math Level 3+



NYS Regents Exams



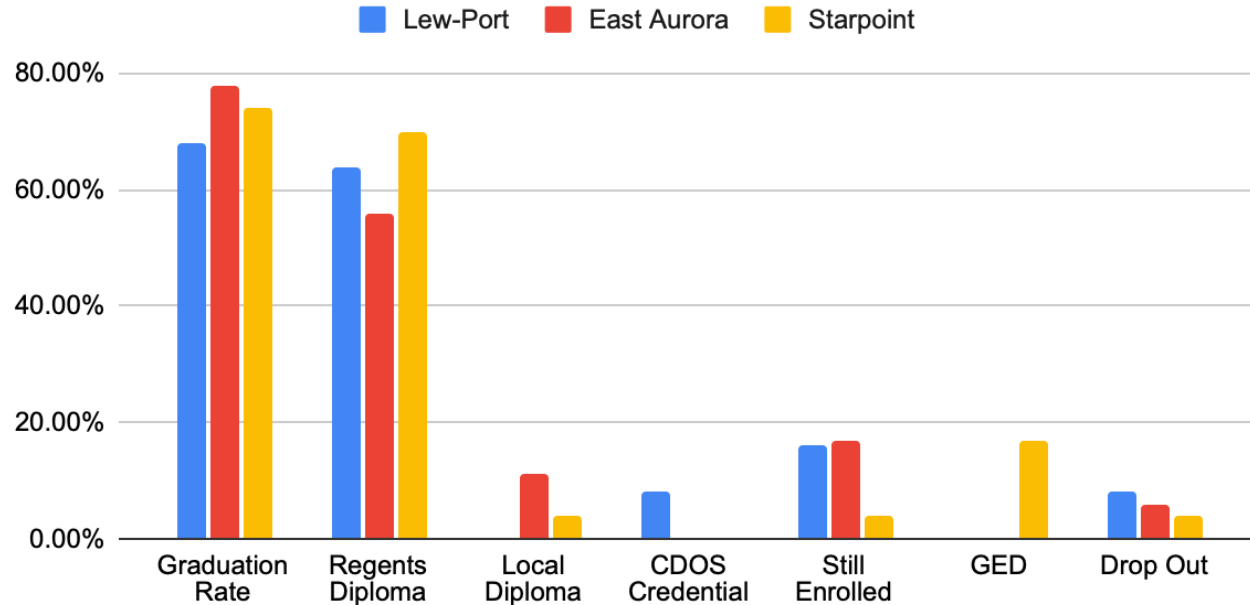
NYS Regents Exam Proficiency



Graduation



SWD Graduation Rate & Rate by Type of Credential



SWD Graduation Rates by Type



Discussion and Questions