

A large group of school children, mostly young boys and girls, are walking along a paved sidewalk. They are carrying backpacks and some are wearing bright clothing like a neon green shirt. In the background, several yellow school buses are parked in a line. The scene is outdoors on a sunny day with trees and a grassy area visible. The entire image is framed by a thick green border.

Lewiston Porter Central School District

Primary & Intermediate Education
Centers 2016-2017



Elementary Program Update

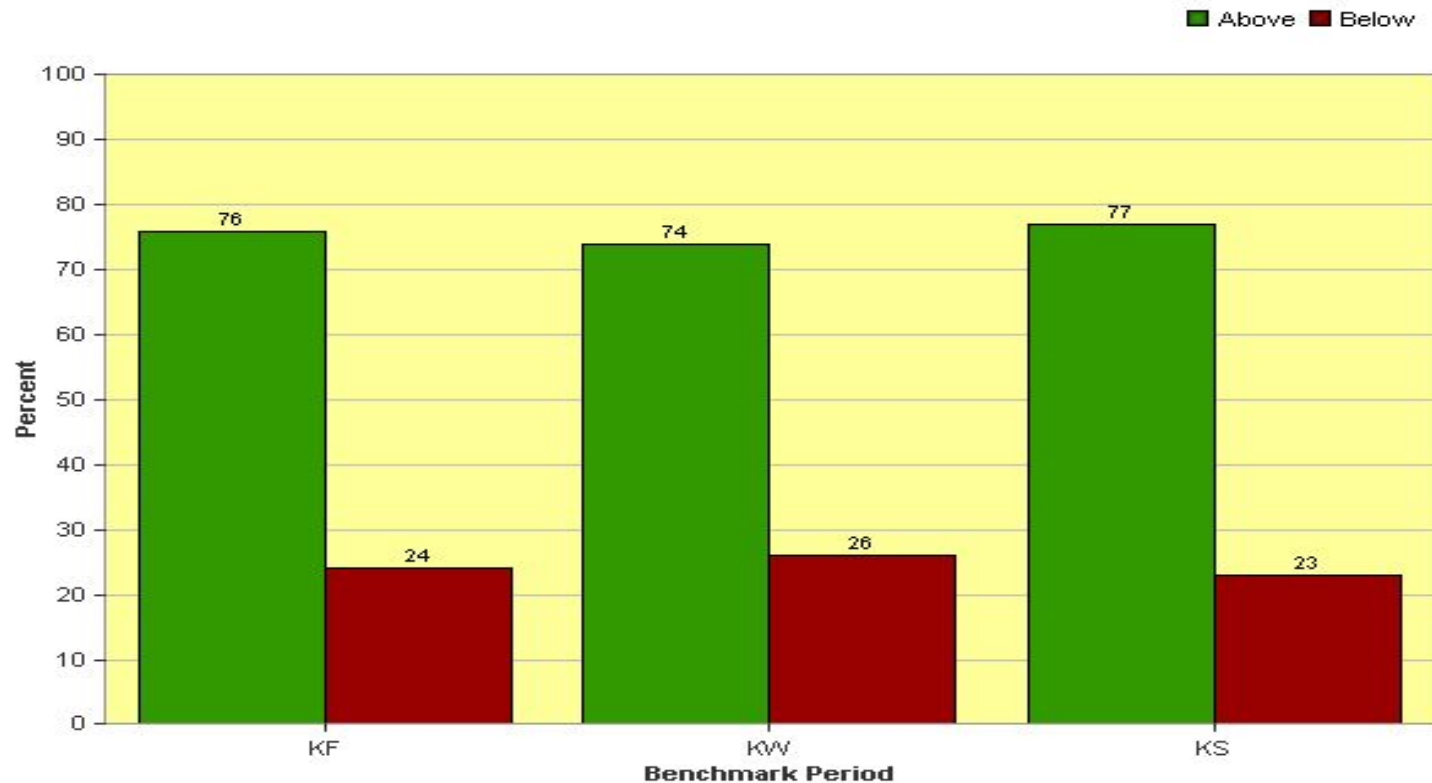


Program Updates:

- Enrichment Program
 - PEC- <https://prezi.com/p/dqnmalcjs1ff/>
 - IEC
- 1:1 Technology Integration
 - PEC
 - IEC
- Workshop Model - Literacy Program

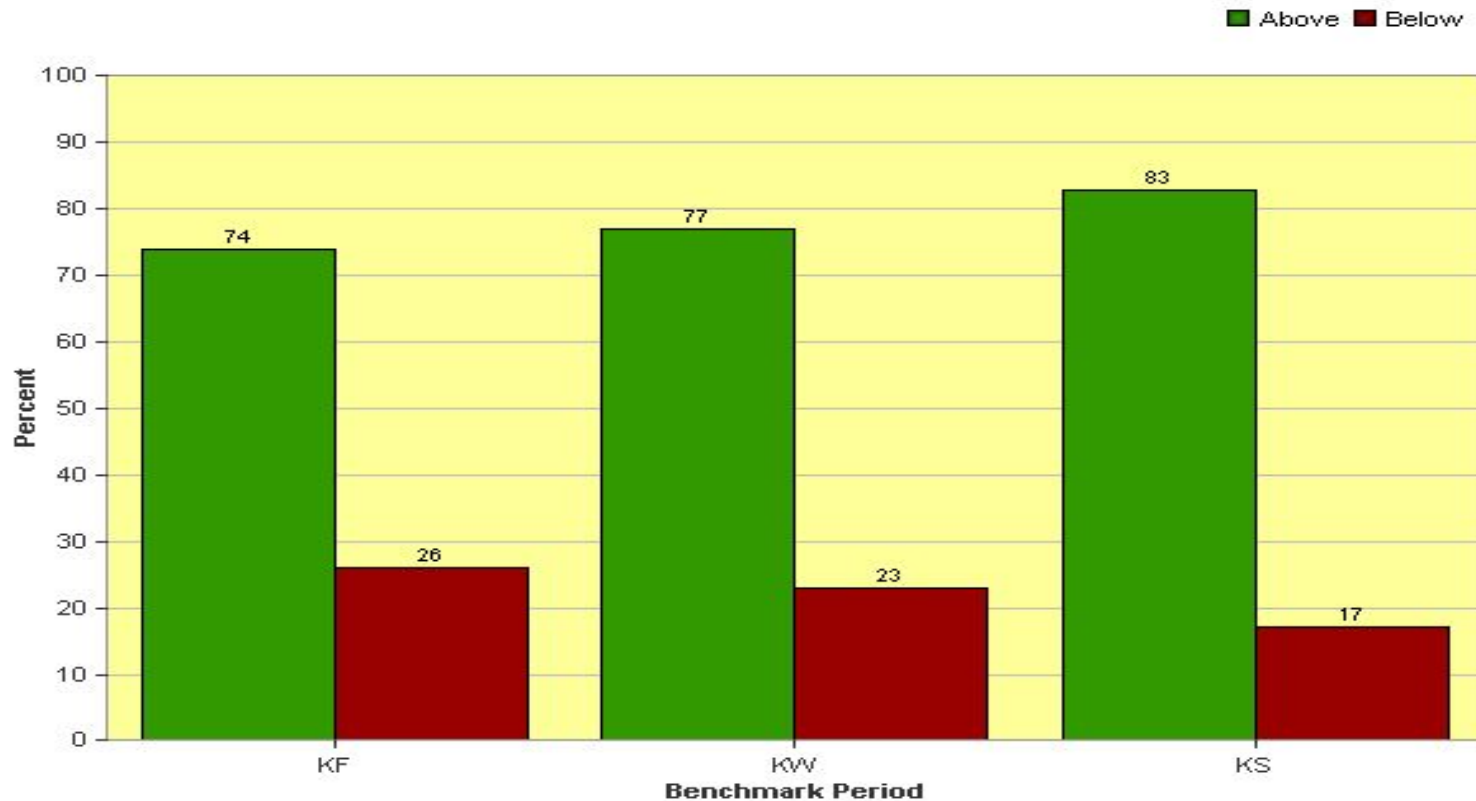


Primary Education Center Kindergarten Letter Sound Fluency



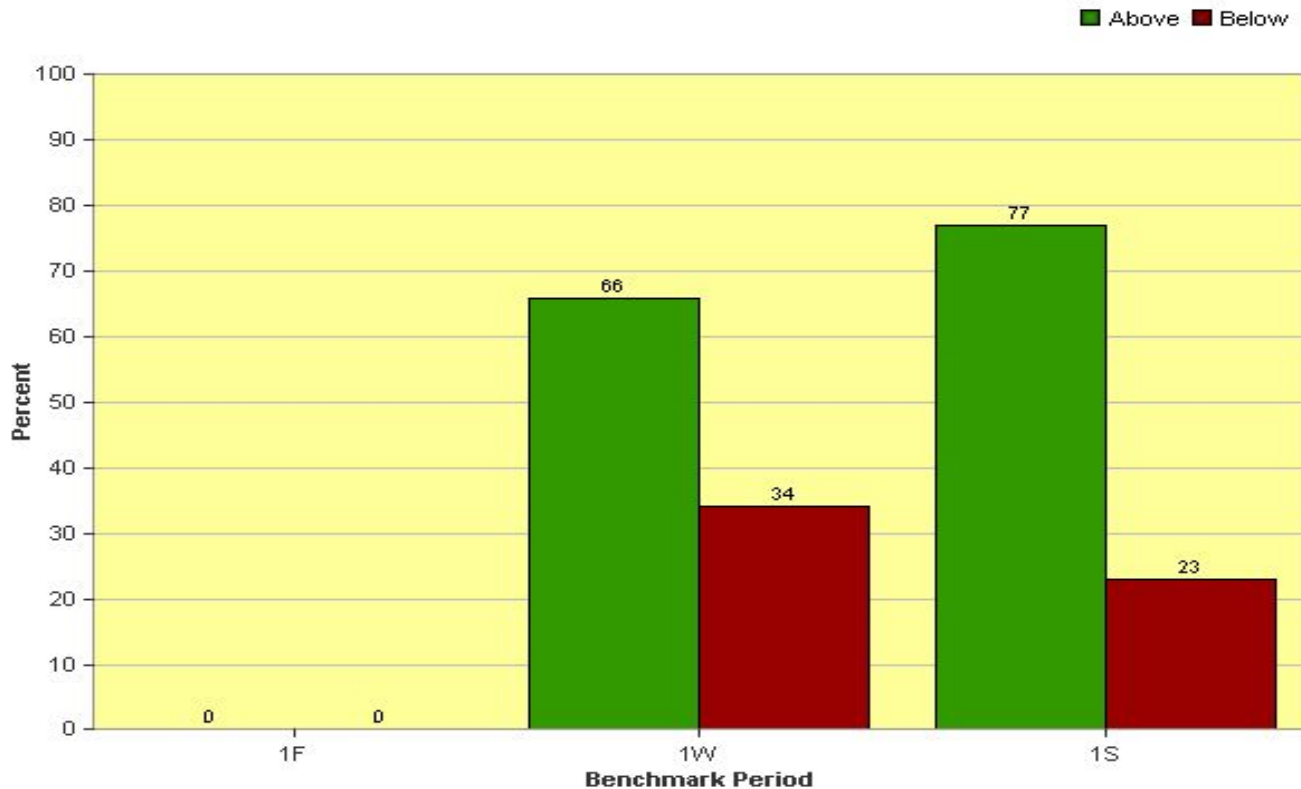


Primary Education Center K Math Quantity Discrimination





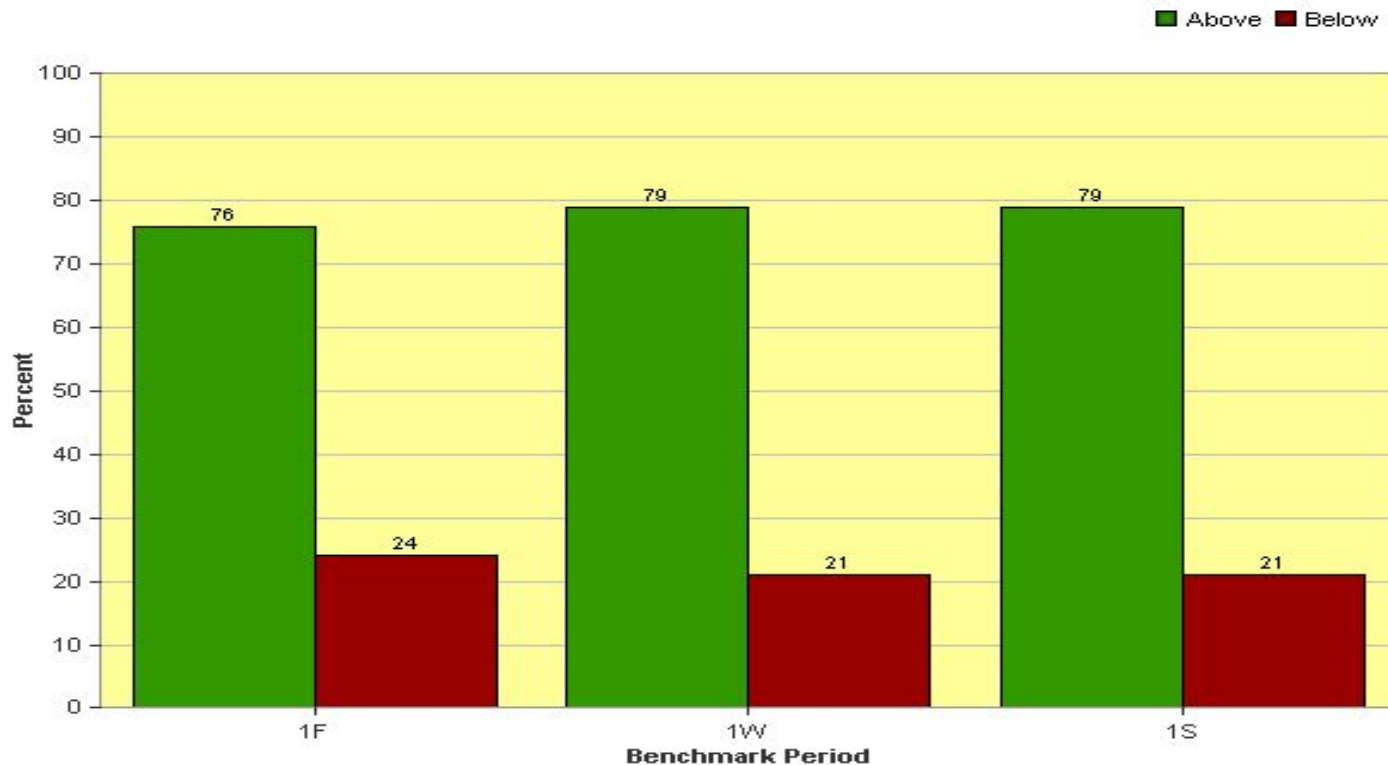
Primary Education Center First Grade Reading Fluency





Primary Education Center

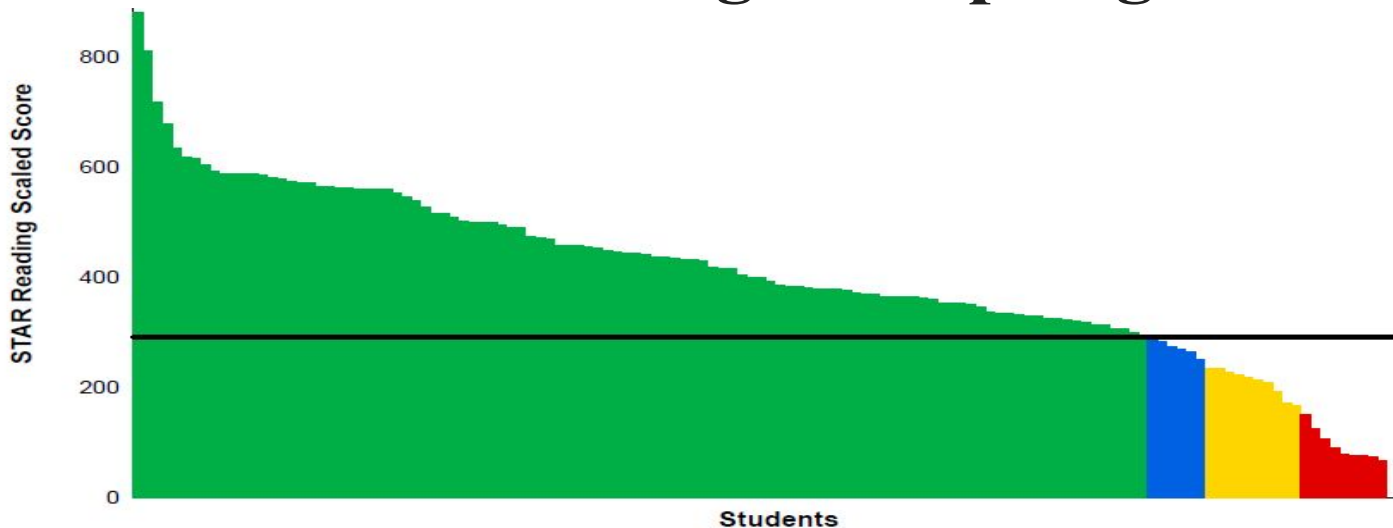
First Gr Math Computation Fluency





Primary Education Center

STAR Reading 2nd Spring

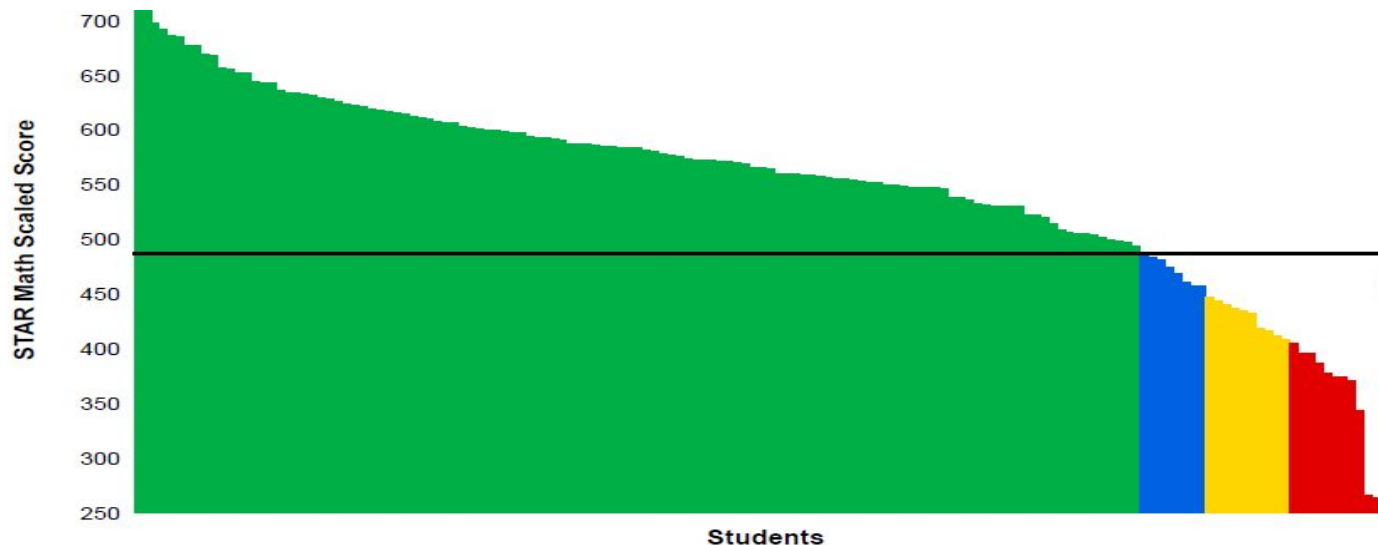


Categories / Levels	Benchmark		Students	
	Scaled Score	Percentile Rank	Number	Percent
At/Above Benchmark				
At/Above Benchmark	At/Above 291 SS	At/Above 40 PR	106	80%
Category Total			106	80%
Below Benchmark				
On Watch	Below 291 SS	Below 40 PR	6	5%
Intervention	Below 239 SS	Below 25 PR	10	8%
Urgent Intervention	Below 164 SS	Below 10 PR	10	8%



Primary Education Center

STAR Math 2nd Spring



Categories / Levels	Benchmark		Students	
	Scaled Score	Percentile Rank	Number	Percent
At/Above Benchmark				
At/Above Benchmark	At/Above 487 SS	At/Above 40 PR	121	81%
Category Total			121	81%
Below Benchmark				
On Watch	Below 487 SS	Below 40 PR	8	5%
Intervention	Below 455 SS	Below 25 PR	10	7%
Urgent Intervention	Below 400 SS	Below 10 PR	11	7%



Primary Education Center

STAR Reading 2nd

Fall



Spring

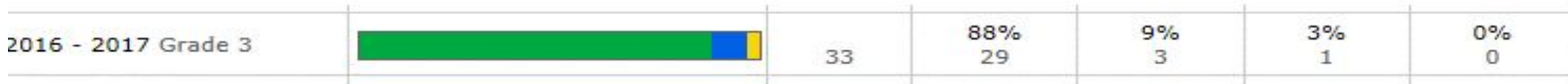


STAR Reading 3rd

Fall



Spring

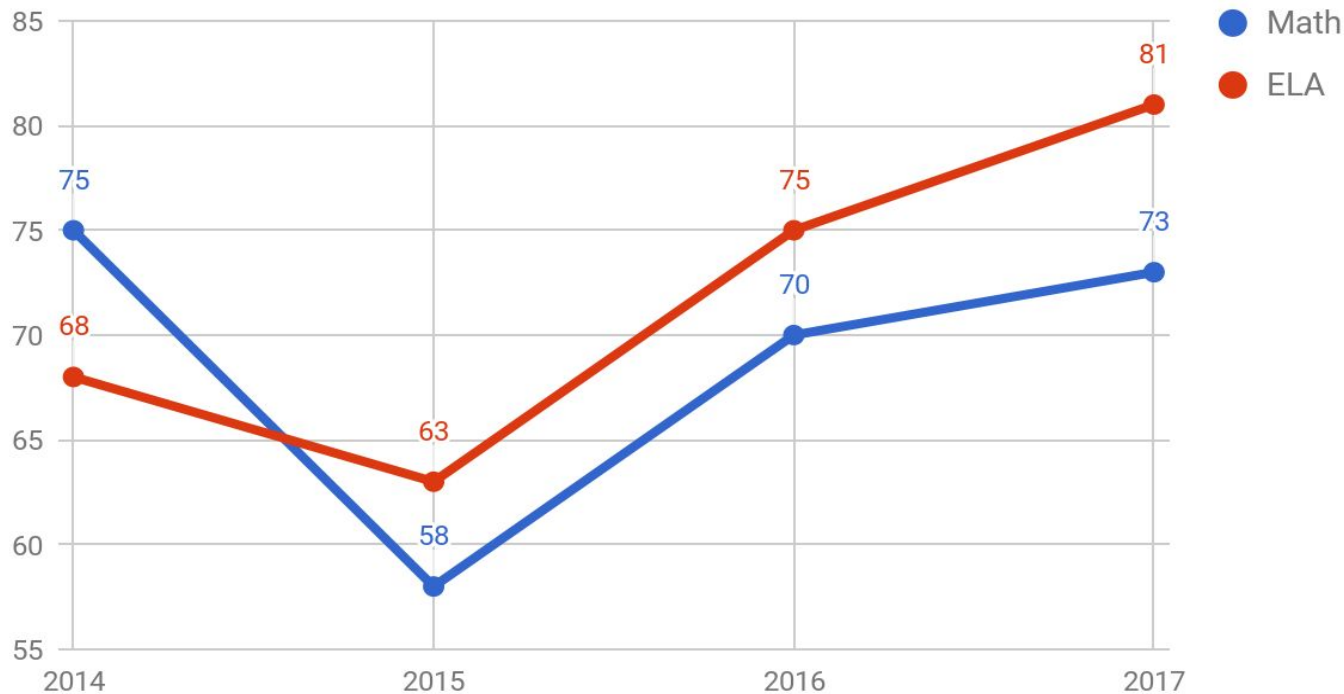




Primary Education Center



PEC MultiAge State Assessment Data

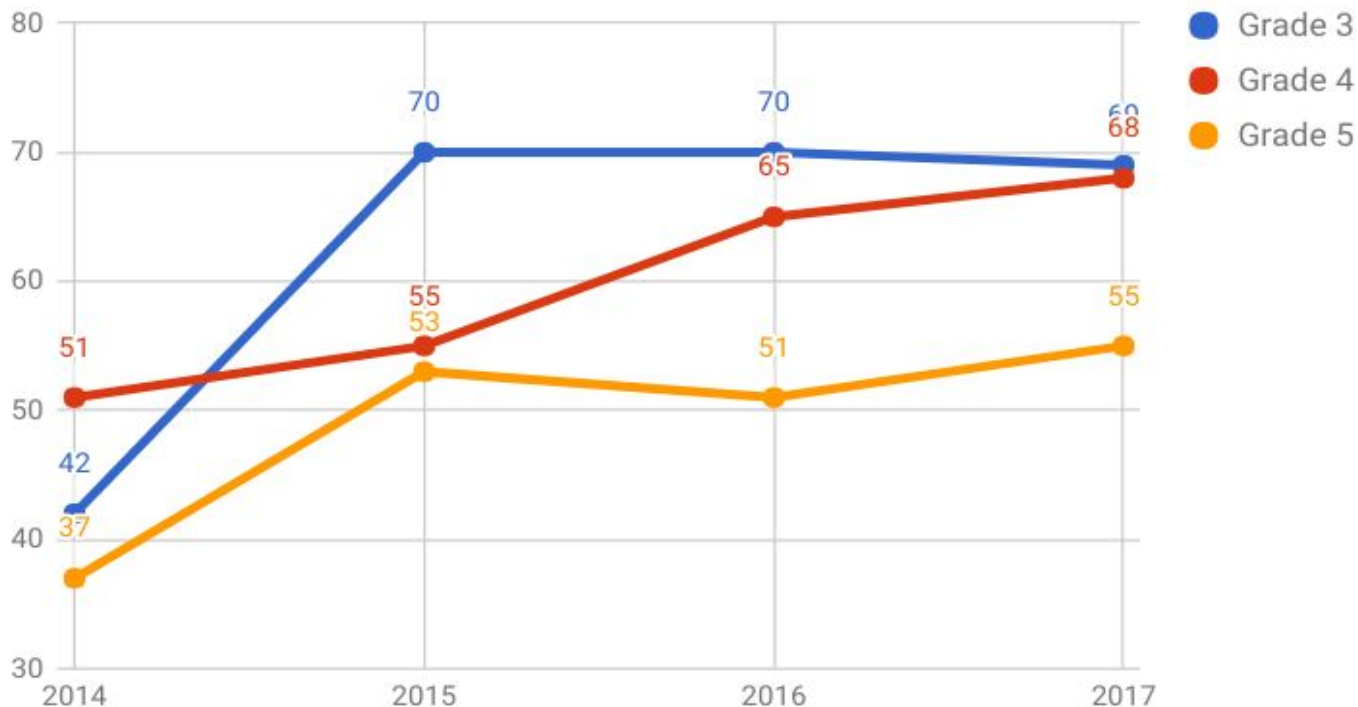




Intermediate Education Center



ELA Proficiency Rates (IEC ONLY)





Intermediate Education Center



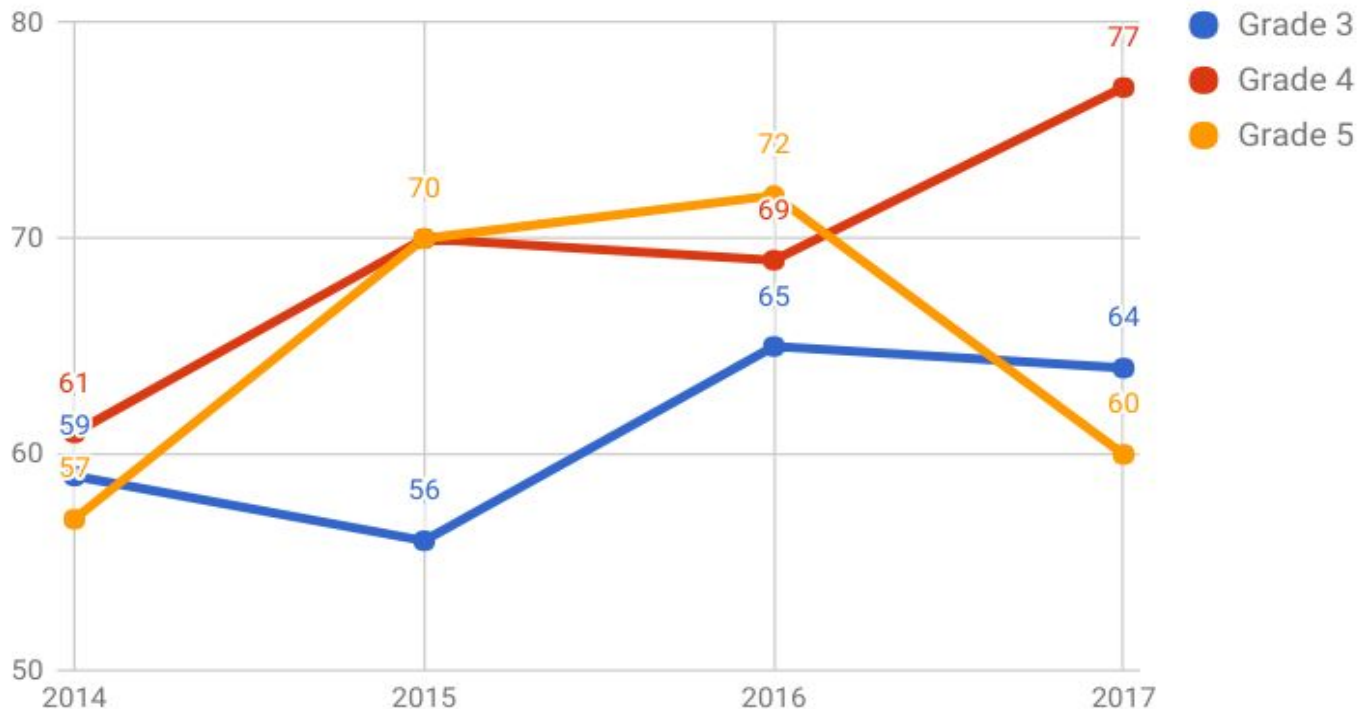
2017 Proficiency Rates	Lew-Port	LP District	New York State	O/N BOCES
Grade 3 ELA	69%	75%	43%	38%
Grade 4 ELA	68%	68%	41%	30%
Grade 5 ELA	55%	55%	35%	32%



Intermediate Education Center



Math Proficiency Rates (IEC ONLY)





Intermediate Education Center



2017 Proficiency Rates	Lew-Port	LP District	New York State	O/N BOCES
Grade 3 Math	64%	69%	48%	46%
Grade 4 Math	77%	77%	43%	44%
Grade 5 Math	60%	60%	43%	39%



Data Summary for ELA and Math



- **Lewiston-Porter has consistently had a higher % of students scoring proficient level compared to New York State and O/N Boces**
- **Looking at the four years of data, there are many variables to look at, such as, opt-outs, curriculum, test changes, special education and economically disadvantaged students.**
- **There have been improvements since 2014, however, there are some drops in the data.**
- **From this data, we would have to look closer at the gap analysis. Together, we would find weaknesses and ways to better instruct**



Goals to Improve Performance



- 1. Work with faculty and staff to increase the % of students receiving a proficient level on the NYS ELA and Math assessment.**
- 2. Take a closer look at what curriculum is being taught and how instruction is being assessed at all grade levels.**
- 3. Collaborate with teachers on how to best support them with implementing curriculum.**
- 4. Reinforce CFA, using Depth of Knowledge and analyzing student data.**
- 5. Help teachers and students develop goals that best meet their individual needs.**



Plan of Action



- **Continue to implement PLC- answering the 4 questions**
- **Focus on professional development**
- **Use monthly meetings to analyze data, look deeper at the curriculum and how instruction is delivered**
- **Getting actively involved in common planning time of each grade level**
- **Work with Peer coordinators and special education teachers**
- **Collaborate with staff in the development of class lists, programs, and special education**
- **Include students leadership with Lancer Council, power breakfasts and after school activities**
- **Educate parents and provide information on ways they can help their child succeed (Newsletter and IEC website)**



Questions?